

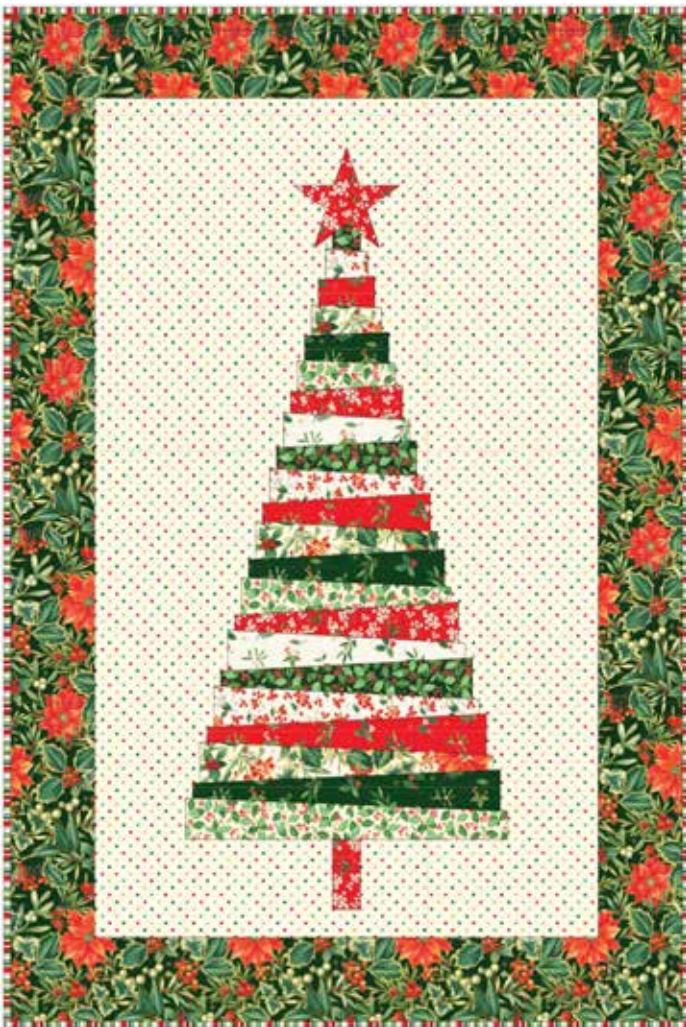
Christmas 2022 Tree Wall Hangings

Perfect for workshops

Each Tree 24" x 36" (60cm x 90cm)

Designed by Lynne Goldsworthy @lilysquilts

using the Christmas 2022 collections from Makower UK www.makoweruk.com



Festive Foliage



Scandi

[makower uk](http://www.makoweruk.com)

Unit 14, Cordwallis Business Park, Clivemont Road, Maidenhead, Berkshire SL6 7BU
+44(0)1628 509640 sales@makoweruk.com www.makoweruk.com

Christmas 2022 Tree Wall Hanging

Each Tree 24" x 36" (60cm x 90cm)

Fabric Requirements

Used For	Festive Foliage	Scandi	Yardage
Prints for trunk, branches and star	2489 Q , 2490 G & Q 2491 Q & R, 2492 G, Q & R,	2456 R1 & R5, 2457 R1 & R5, 2458 R, 2459 R, 2460 R, 2461 R	One F8th of each
Background (BKG)	1948 Q2	302 WGM	75cm / ¾ yd
Border and backing	2489 G	2455 R	1.50m / 1 ½ yds
Binding	2203 G3	2461 R	One FQ
Wadding	28" x 40" (70cm x 1m) - 279 Cotton Mix 80-20 from http://www.vlieseline.com/en		
Threads	Aurifil 50wt for piecing and 40wt for quilting from http://www.aurifil.com		
Templates	One star template		
Fusible web	5" square of Bondaweb from http://www.vlieseline.com/en		

Notes:

- Read the pattern in full before starting.
- ¼" seams are used throughout except where stated otherwise.
- Press after each seam, pressing seams open or to one side as preferred.
- WOF - width of fabric - a strip of fabric cut from selvedge to selvedge.
- WOFQ – a strip of fabric cut from selvedge to centre cut on a FQ or F8th
- LOF – length of fabric – a strip of fabric cut parallel to the selvages.
- Make sure to visit <http://www.makoweruk.com/projects/> to ensure you are working from the most up-to-date version of the pattern.

Cutting the fabrics

1. Follow the fabric layout in the main image for the print fabrics you are using to cut the twenty-two strips that make the tree shape. Each strip is 2" wide and the length for each is shown in fig 1. The measurements shown are the cut (not finished) measurements.
2. Cut a 1 ½" x 3" strip of print fabric for the tree trunk and a 5" square of print fabric for the star.
3. Cut the BKG fabric into:
 - Four 2" WOF strips and cut into two of each of the following lengths: 5 ¾", 5 ½", 5 ¼", 5", 4 ¾", 4 ½", 4 ¼", 4", 3 ¾", 3 ½", 3 ¼", 3", 2 ¾", 2 ½", 2 ¼", 2", 1 ¾", 1 ½", 1 ¼", 1" and ¾".
 - Cut one 1 ½" square from the remainder of one of the strips.
 - Two 3 ¾" WOF strips each trimmed to 30 ½" long.
 - One 5 ¾" WOF strip cut into two 4" lengths and one 12" length.

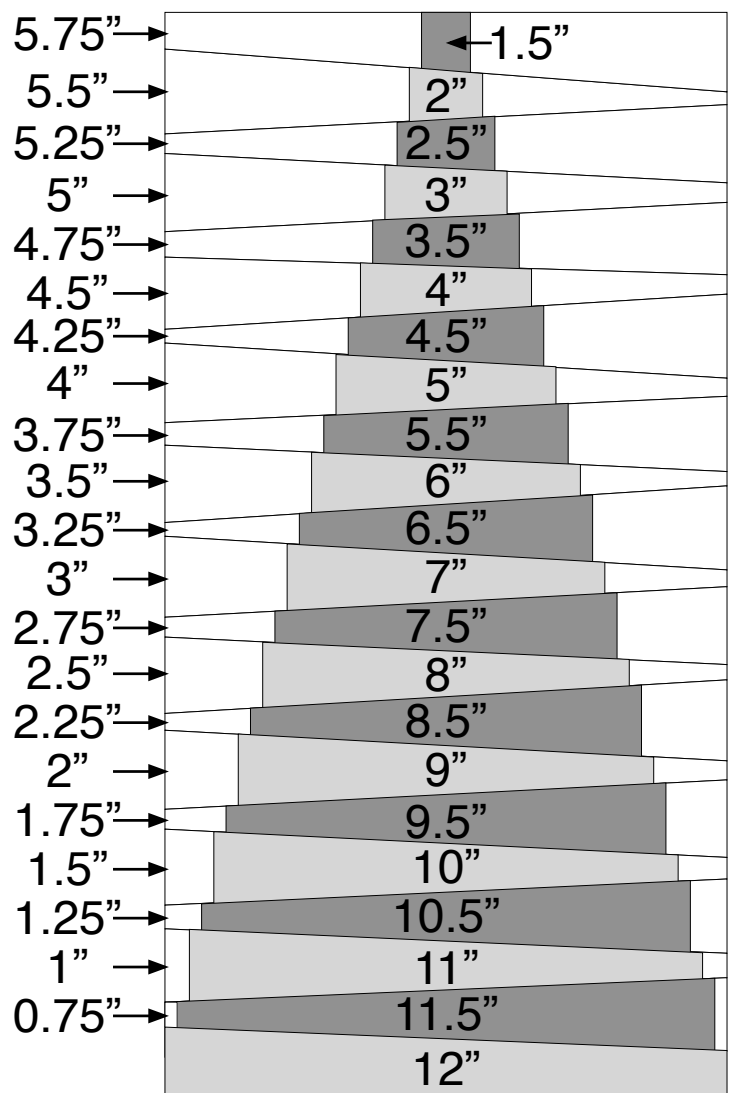


fig 1

4. Cut the border / backing fabric into:
 - Two 3 1/2" LOF strips each trimmed to 30 1/2" long for the side borders. NB: these strips are cut parallel to the selvages
 - Two 3 1/2" WOF strips each trimmed to 24 1/2" long for the top and bottom borders.
 - Trim the remaining piece to 28" x 40" for the quilt back.
5. Cut the binding fabric FQ into six 2 1/2" WOFQ strips.

Making the wall hanging

1. Sew the 2" strips of BKG fabric onto the ends of all but the longest (12" long bottom strip) of the 2" print strips following fig 1 for which background strips should be sewn onto the ends of which print strips.

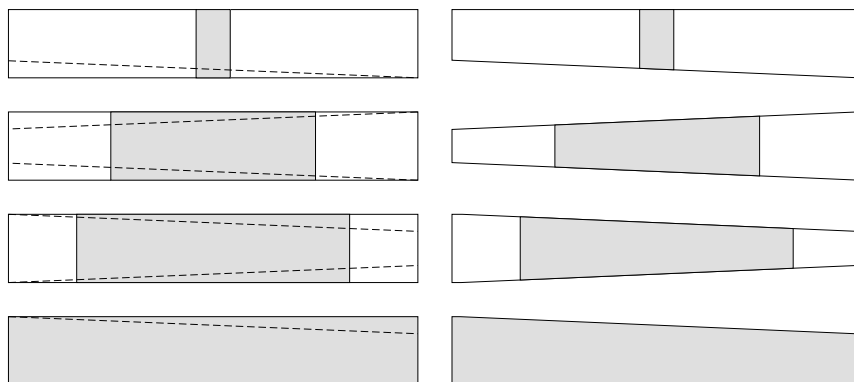


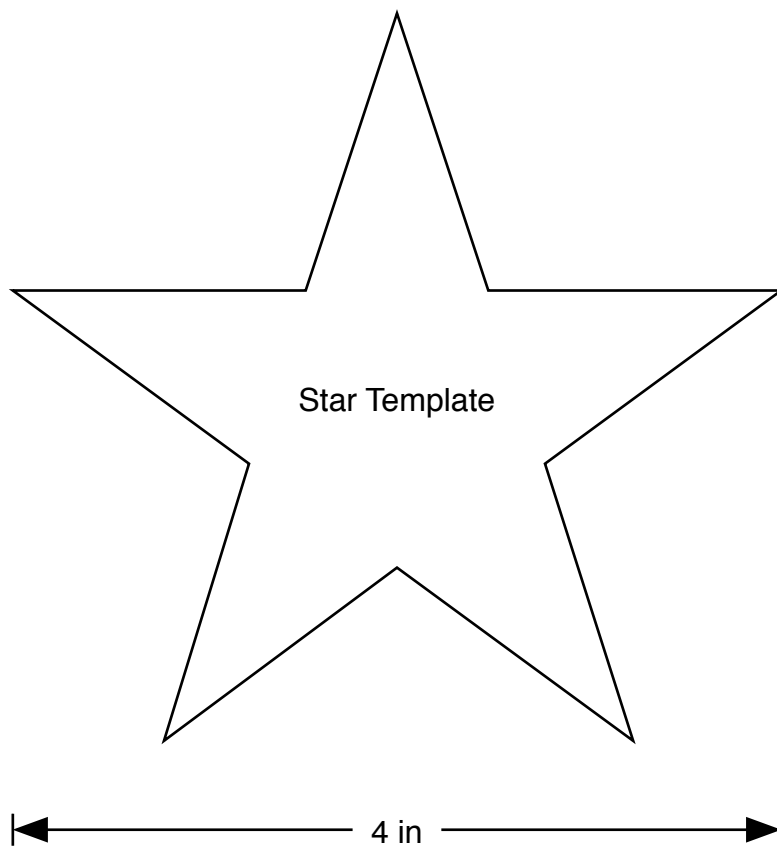
fig 2-9

2. Trim each of the strips as shown in figs 2-9 and as follows:
 - The top strip should be trimmed so that the right end remains 2" wide and the left side is trimmed to 1/2" from the bottom
 - The bottom strip should be trimmed so that the left end remains 2" wide and the right side is trimmed to 1/2" from the top.
 - The remaining strips should be trimmed so that they remain 2" wide at one end and trimmed to 1/2" from both the top and bottom at the other end (so that the narrower end measures 1" wide). **NB: when cutting directional prints, take care to ensure that they are cut so that they are going to be the right way up when the tree is pieced.**
3. Sew the strips together, following the layout in the main quilt image.
4. Sew the BKG fabric 1 1/2" square to the bottom of the 1 1/2" x 3" print fabric tree trunk piece. Sew 4" x 5 3/4" BKG fabric rectangles to either side of this piece. Sew to the bottom of the tree.
5. Sew the 5 3/4" x 12" BKG fabric rectangle to the top of the tree. Trim the top of this piece to bring the quilt top to 30 1/2" tall.
6. Trace the star template onto the back of the 5" square of Bondaweb, fuse to the back of the 5" print square, cut out, remove backing paper and fuse to the top of the tree. Stitch to secure using a straight, zigzag or blanket stitch.
7. Sew the two 3 3/4" x 30 1/2" BKG fabric strips to either side of the quilt top.
8. Sew the 3 1/2" x 30 1/2" (LOF) border print strips to either side of the quilt top.
9. Sew the 3 1/2" x 24 1/2" (WOF) border prints strips to the top and bottom of the quilt top.

Finishing the wall hanging

1. Sew the binding strips end to end using diagonal or straight seams as preferred and press wrong sides together along the length to make a double fold binding.
2. Make a quilt sandwich, basting together the back, the wadding and the top.
3. Quilt as desired then trim square, removing excess wadding and backing. We quilted horizontal lines following the pattern made by the alternating piecing lines using a cream 40wt Aurifil thread on the front and back.
4. Bind, taking care to mitre the corners.

Make sure to print templates at “100%” or
“no scaling” and to check that the guide line
has printed to the correct length

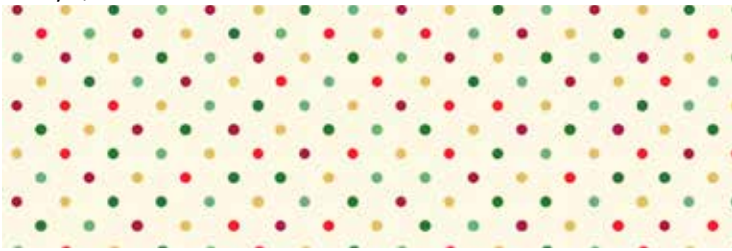




2489/Q Poinsettia



2489/G Poinsettia



1948/Q2 Multi Spot



2203/G3 Stripe



2490/Q Holly Trail



2490/G Holly Trail



2492/G Scatter



2492/R Scatter



2492/Q Scatter



2491/R Berries



2491/Q Berries



2491/T Berries



2493/Q Metallic Holly



2493/R Metallic Holly



2493/G Metallic Holly



2455/R Scenic



2460/R Scatter



2457/R1 Snowflakes



2457/R5 Snowflakes



2456/R1 Stars



2456/R5 Stars



2459/R Folk

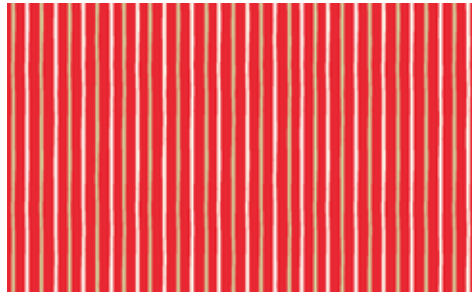


2458/R Geometric



2463/1 Advent

(Actual size of image shown 60 x 112cms 24" x 44")



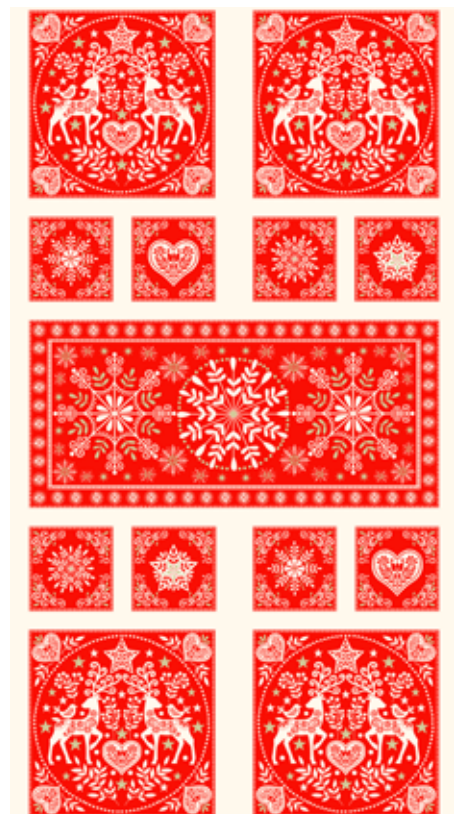
2461/R Stripe



1473/Q Linen Texture



1473/R Linen Texture



2462/R Panel

(Actual size of image shown 60 x 112cms 24" x 44")



2455/S

Scenic



2460/S

Scatter



2457/S2

Snowflakes



2457/S6

Snowflakes



2456/S2

Stars



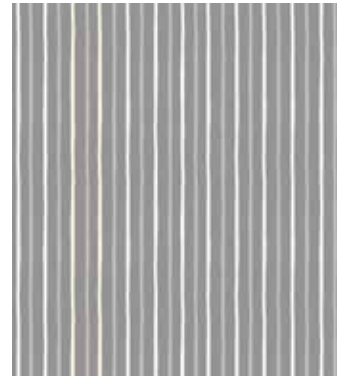
2456/S6

Stars



2459/S

Folk



2461/S

Stripe



2458/S

Geometric



2462/S

Panel

(Actual size of image shown 60 x 112cms 24" x 44")



1473/Q

Linen Texture



1473/S2

Linen Texture